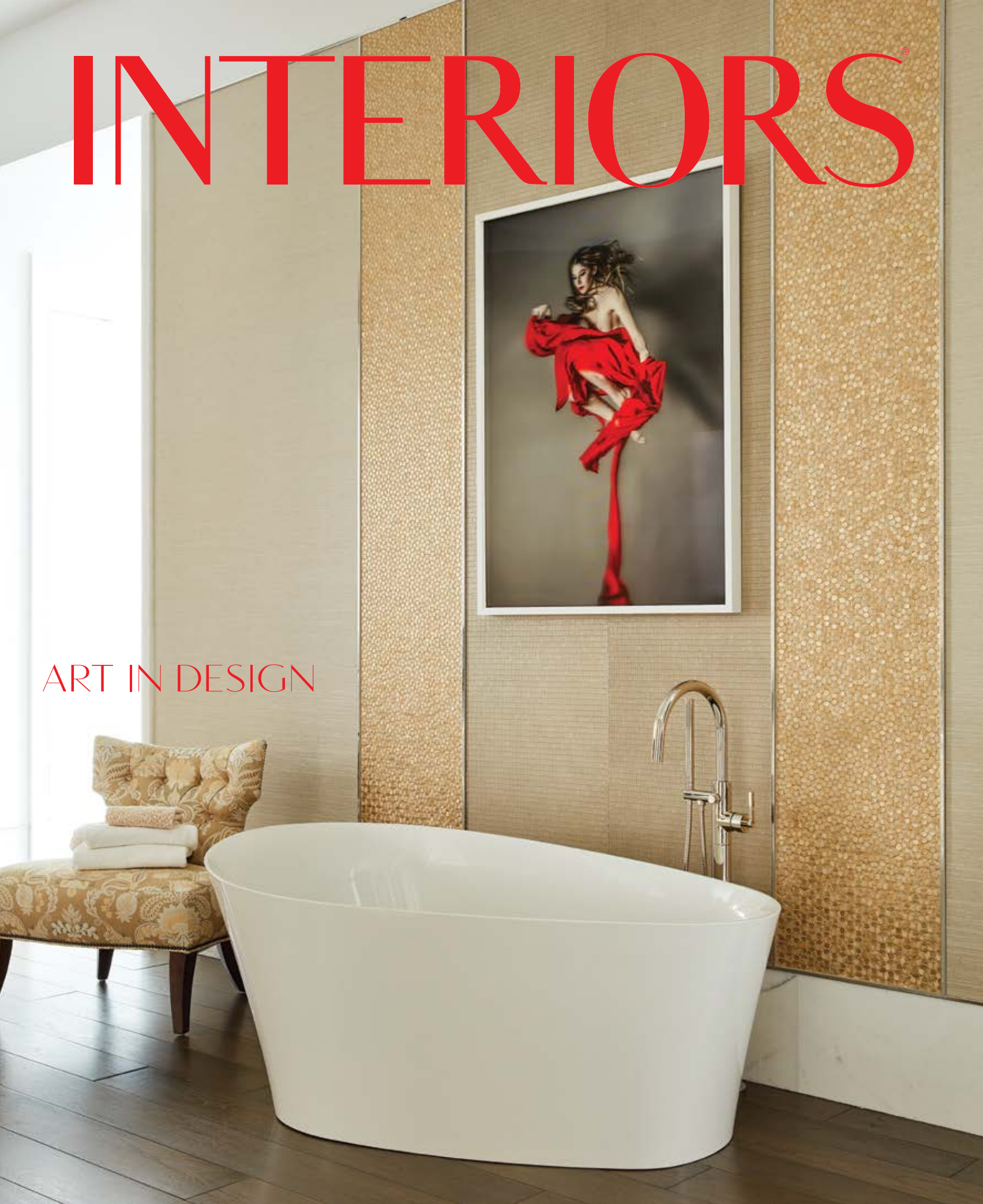


INTERIORS

ART IN DESIGN



SHINE BRIGHT LIKE A DIAMOND

INTERIOR DESIGN: JEFF SCHLARB

TEXT: ABIGAIL STONE

PHOTOGRAPHY: AUBRIE PICK

Interior designers often talk about creating a sanctuary for their clients. To many that translates into a minimalist study in cream and sand. Not Jeff Schlarb. His interpretation is a symphony of color, shape, pattern and texture orchestrated into harmony by an impeccable eye for balance and an obsession with detail. It was exactly what his client, Margaret Coyle, wanted for her new home.

Originally constructed in 1937 and located in San Francisco's Diamond Heights neighborhood, the house represented a new chapter for Coyle, a first-time homeowner. "I wanted a space whose energy would inspire me," she says. "Finding someone who would be a fun, thoughtful, collaborative partner in creating that vision was critical." Impressed with the work Schlarb had done on a friend's condo, she reached out to him. "We clicked immediately," Schlarb recalls. "She was passionate, curious and fearless. She picked us because she felt that we would understand her and take her to where she needed to go."

To ensure that Schlarb and his team understood her requirements, she presented them with a vision board and a mission statement. "I wanted a home that provided serenity and nourishment for the soul," she recalls. "A delightful and chic entertaining experience influenced by my personal values and my journey." The dossier outlined her interest in music, her love of travel and her wish to use female and underrepresented minority artisans wherever possible. Her collection of images presented the wish for a soft, gentle space; her accomplishments described her as successful and energetic.







Schlarb deftly funneled all of this information into his design. Witness the dining room's Petra III chandelier in quartz and brass by Melbourne-based Christopher Boots, which hangs over a mahogany table and Cahn chairs from Bright. "I had shared that Australia had captured my heart because I had a love interest there," Coyle notes. "They found this beautiful piece that ties into the idea that this person had brought a lot of light into my life." The hand-painted mural in the wine room taps into her love of travel and her wish to include historically marginalized communities. "I had seen indoor murals in Saigon and Tel Aviv, so I knew I really wanted to include one," says Coyle. "I thought maybe we'd riff off one of my travel photos." Instead Schlarb and his team introduced her to the work of Veracruz-born, Oakland-based artist Jet Martinez, who created a custom piece that draws on the folk art of his native Mexico. Coyle's love of music is threaded throughout these spaces. In the rich green guest bedroom, a half-dozen favorite album covers hang above the bed, a neon sculpture picks out the lyrics from The Eurythmics song, "Sweet Dreams Are Made of This," and, on one nightstand, an acrylic floating frame displays the ticket stubs from a Grateful Dead show, the first concert Coyle ever attended.

In the media room, the painted mural features lyrics from a Fleetwood Mac song alongside images of Stevie Nicks (her style also informs the bohemian details in the primary bathroom). The room's louche vibe is pure rock and roll, courtesy of a sprawling curved Lawson Fenning sofa, covered in a grape mohair, a Lindsay Cowles wallpaper on the ceiling and one of Angela Chrusciaki Blehm's works. Coyle's dynamic personality informs her office, where a framed piece of Drop It Modern's Wavelength Mural bends from the ceiling to the wall, providing a unique backdrop to Coyle's many Zoom calls. "It's a fun way to use wallpaper," says Schlarb. "It captures the light fixture and gives the room a cozy feeling." Its black and white pattern is partnered with drapery by Nobilis. Contrast the bold palette of these rooms with the restful aura of the primary bedroom. Here, an intricate floral wallpaper by British artist Anna Glover, inspired by Japanese prints, reaches towards the ceiling, its cerulean blue settling gently over a pair of glazed ceramic lamps by Barbara Barry, a welcoming velvet chaise and a side table.

"She wanted a Carrie Bradshaw moment," says Schlarb of Coyle's closet. The runway-length space holds pieces by Celine Gabrielle, Zoe Bios Creative and Yana Potter—all adhering to Coyle's wish to showcase female artists. The living room forms a delicate partnership with the roof deck and its breathtaking view, setting the space firmly in San Francisco: Emma Hayes' Blue Cloud wallpaper, C. Jeré's metal wildlife wall sculpture, a pair of white bouclé swivel chairs and a sofa from Dmitriy & Co, covered in blue velvet from The Sign, duplicate the City's sky on a perfect day, while the black and white chevron pattern of Bernhardt's Meridian coffee table conjures up the graphic aerial vision of Noe Valley. "Every room in the home tells a story of my journey," Coyle marvels. "They really listened to everything I had to say and incorporated everything that was important to me." ■ Jeff Schlarb Design Studio, jeffschlarb.com



